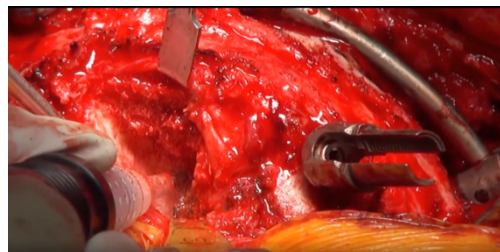
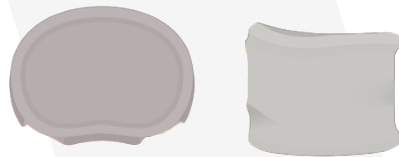
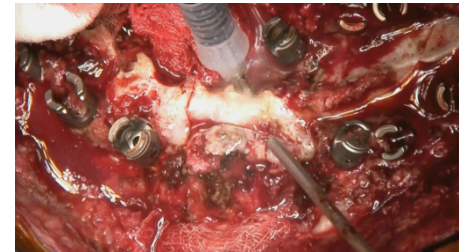
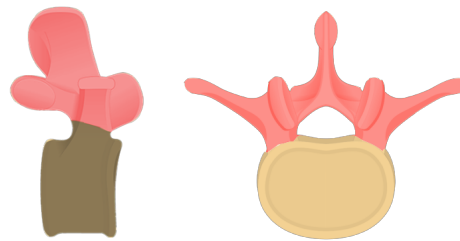
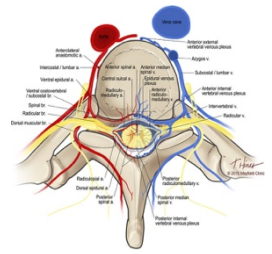
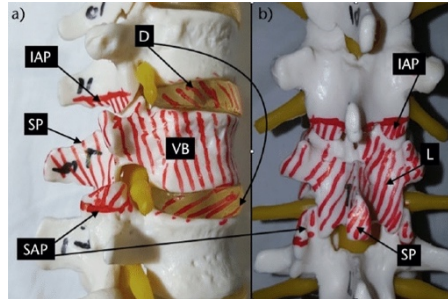


Vertebral Column Resection (VCR)

The VCR is a procedure requiring a significant amount of bone removal, some of which is done in close proximity to both the spinal cord and the great vessels (Descending Aorta & Common Iliac Vein) running anteriorly to the lumbar vertebral bodies. Given the need to preserve healthy bone for grafting, combined with the importance of minimizing blood loss while resecting the cancellous vertebral body, the VCR is a great multiprobe procedure.

When performing a VCR, the surgeon will remove the posterior elements (the Lamina, facets & transverse processes) first. This is traditionally done using a Leksell rongeur, a drill, and Kerrisons. Such tools result in significant blood loss and destroy healthy bone that could be used later, as autograft, in the case. These tools can be replaced with a blade (20 or 25mm) and a shaver (micro or Macro). The pedicle is often then removed still using a blade. The bone removed using the blade is shaded in red within the image to the right. They are also removed in the image below.



Once the posterior elements and pedicles have been removed, the vertebral body remains. The surgeon must now remove a large amount of highly vascular cancellous bone, located largely within the vertebral body. The Diamond shaver allows the surgeon to aggressively resect the cancellous bone while minimizing the blood loss.

So What?

Utilization of both a blade and diamond shaver in a VCR procedure adds great economic value. Dr. Jensen showed, when using BoneScalpel for decompressions, large amounts of money can be saved due to the increased volume of autograft available. In a single level VCR we are able to harvest autograft from the resection of the lamina, facets, transverse processes & the pedicles.

The Diamond shaver adds significant economic value when used in a VCR because of the decreased blood loss when compared to alternative devices as seen in the research done by Dr. Newton. The tissue selectivity of the Diamond shaver also supplies the surgeon with added safety when working closely to the delicate structures surrounding the vertebral body.

Selling Tips

- Introducing both blades & shavers during the evaluation phase, can result in greater adoption as there is less concern for cost.

Suggested Tip Combinations

20 mm blunt blade or 25 mm blade + Diamond Shaver

Sales App Videos

- [**Dr. Shah VCR**](#)
- [**Dr. Samdani VCR Part 1**](#)
- [**Dr. Samdani VCR Part 2**](#)